

AISLABY PARISH PLAN 2004

The enclosed document is your household's copy of the Aislaby Parish Plan 2004.

The process of producing the plan began with the "Drop-in-Day" held last year in the Parish Hall, followed by:

- The Questionnaire
- Analysis of the responses to the Questionnaire
- Identification of the Actions needed to be taken
- Production of a basic plan for carrying out these actions.

Some of the Actions will be carried out by the Parish Council. Many, however, require volunteers from the community. This is not only essential from a workload point of view, but we consider it the best way forward because:

- Individual topics will be tackled by people with a real interest in them.
- It will speed up improvements to our Parish.
- It will create more community involvement and increase Parish Council / community interaction. The Parish Council needs community support.

If anyone in your household would like to volunteer to help, or lead, any of the actions, please either

- a) complete the tear-off slip below and deliver it to the Parish Clerk, Pat Kenworthy, at 11 Egton Road, Aislaby, or
- b) phone Pat Kenworthy on 811476 or Keith Sleightholme on 810628.

Please do this by the end of September at the latest.

The Parish Council will monitor all future activities; reports on general progress with implementation of the plan will be posted on the new community notice board and mentioned in the Parish Magazine.

The Action Plan will be updated and re-issued at appropriate times in the future. In the meantime, if you wish to put forward any points of view, or identify any new issues requiring attention, please contact the Parish Council Clerk.

The Parish Plan Steering Committee.

✂.....

Aislaby Parish Plan 2004

I wish to volunteer to help with Action(s)
(identification letter(s) from Plan)

Name:

Address:

Phone No:

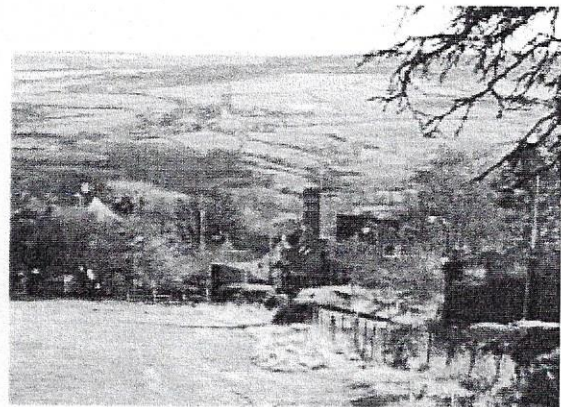
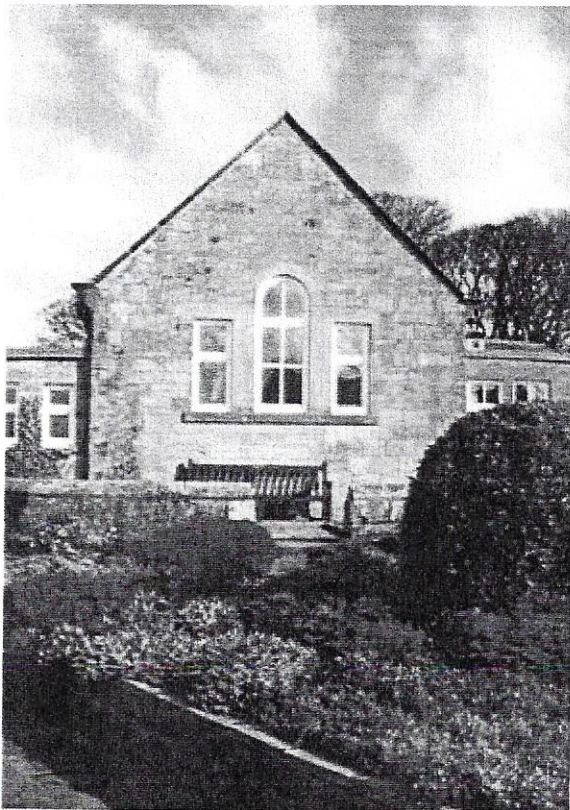
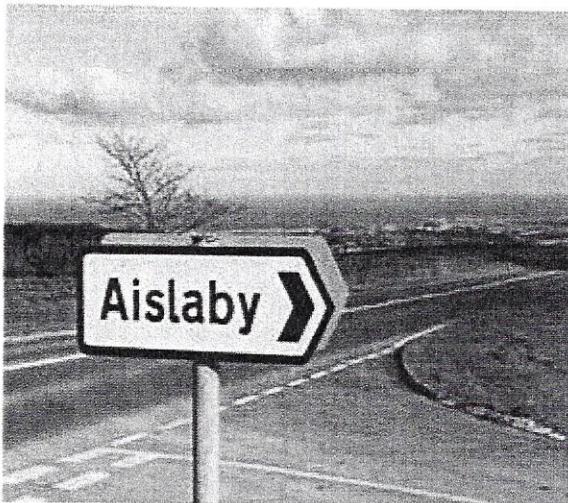
Any particular comments:

(Deliver to Pat Kenworthy at 11 Egton Rd by end of Sept. latest please)



“YOUR VOICE”

AISLABY PARISH PLAN 2004



QUESTIONNAIRE RESULTS AND ACTION PLAN



CONTENTS

1. Committee and Contributors
2. Introduction
3. Parish Plan – Questionnaire Analysis
4. Action Plan
5. Parish and Conservation Area Boundaries
6. Finances



COMMITTEE and CONTRIBUTORS

Steering Committee:

Chairman: Keith Sleightholme
Vice Chair: Jim Storey (To Oct. 2003.)
Secretary: Meg Hodgson
Treasurer: Pat Kenworthy

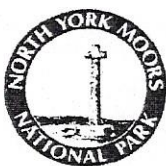
Other Members:

Tom Bennett
John Fuller
Yvonne Harrison
Rodric Harrowing
Jane Little
Malcolm Lockey
Sheila Warren
Ray Dobson

Other Contributors:

Sandra Dobson - Whitby Gazette Items
Irene Williams - Parish Magazine
Angela Palliser - YRCC
Helen Beeforth)
Niall Carson) - Printing

Radio Cleveland IT Bus
Drop-in-Day lady helpers (refreshments, etc.)



North Yorkshire
SMALL PROJECT FUND





INTRODUCTION

Aislaby Parish is located in the Esk Valley, 3 miles inland from Whitby, and is within the North York Moors National Park. The parish contains just the one village of Aislaby, and has the A171 Whitby to Guisborough road on the North side, and the A169 Whitby to Pickering road to the East.

Aislaby has three premises available for use of the community: St. Margaret's Church (C.of E.); the Parish Hall with a small village green outside; and the Huntsman public house. Aislaby no longer has a school, Post Office or shop.

The nearest railway station is at Sleights, 2 miles away, on the Esk Valley (Whitby to Middlesbrough) line. Buses run approx. 5 times per day each way – Scarborough via Whitby, and Middlesbrough via Guisborough.

Aislaby is surrounded by farmland and also has the historically famous Aislaby Quarries. Sandstone has recently been extracted again on a small scale, and for a limited period, following closure of the quarries almost a century ago.

The Parish Council decided to support the production of a Parish Plan for several reasons:

- Such plans are encouraged by the Government, and government bodies will give funding priority to projects which have majority community support and have been thoroughly researched.
- Residents' views are known and can be taken into account by relevant bodies from Parish Councils to Government organisations.
- The community involvement is beneficial in itself, but also supports the Parish Council who do not want to operate in isolation.

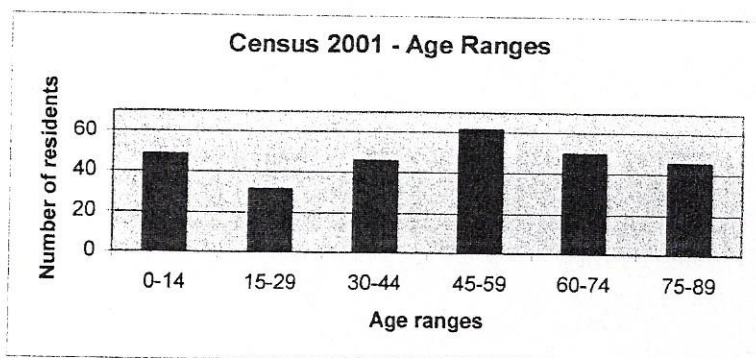


The “ Drop – in – Day” held in the Parish Hall resulted in many topics being discussed, and the ensuing questionnaire was based on these topics. The potential improvements covered by this plan are generally concerned with the existing facilities. No major changes are proposed.

Statistical Information

Population by census: 2001 - 280
 1991 - 276
 1901 - 273
 1891 - 340
 1870 - 360
 1801 - 211

The Electoral Register totalled 231 at 13th April 2004.



140 questionnaires were sent out (1 per household), but at least 20 can be discounted due to holiday properties being unoccupied at the time.

The return of 83 (69%) is high for this type of exercise.



QUESTIONNAIRE ANALYSIS

The following analysis contains:

- The question.
- The number of households that responded.
- The numerical response.
- Comments that were written by respondents.
- Interpretation: This is the steering committee's view of the key points raised by the response.
- Action: This is the steering committee's view of what should be done as a result of the response. All Actions feature in the Action Plan, and have been given a reference letter.

Note: Some questions are grouped together, so do not have their own individual interpretation / action.



Aislaby Parish Plan 2004
Parish Plan Questionnaire Analysis
Results, Comments Received, Interpretations and Actions

QUESTION NO: 1

NUMBER OF RESPONDENTS TO QUESTION: 79

Do you experience transport difficulties in getting to and from Aislaby?

Often	4	(5.1%)
Occasionally	28	(35.4%)
Never	47	(59.5%)

QUESTION NO: 2

NUMBER OF RESPONDENTS TO QUESTION: 56

Do you have any difficulty in getting transport to the following?

	<u>often</u>	<u>occasionally</u>	<u>never</u>
Hospital	2 (3.6%)	7 (12.5%)	42 (75.0%)
Doctor	2 (3.6%)	7 (12.5%)	43 (76.8%)
Chemist	1 (1.8%)	5 (8.9%)	41 (73.2%)
Chiropodist	1 (1.8%)	4 (7.1%)	40 (71.4%)
Optician	1 (1.8%)	4 (7.1%)	42 (75.0%)
Dentist	1 (1.8%)	7 (12.5%)	41 (73.2%)
Other medical facility	1 (1.8%)	3 (5.4%)	35 (62.5%)

QUESTION NO: 3

NUMBER OF RESPONDENTS TO QUESTION: 75

How do you rate the bus service through Aislaby?

	<u>good</u>	<u>reasonable</u>	<u>poor</u>	<u>no opinion</u>
Route	20 (26.7%)	33 (44.0%)	3 (4.0%)	11 (14.7%)
Timetable	6 (8.0%)	34 (45.3%)	17 (22.7%)	12 (16.0%)
Cost	7 (9.3%)	34 (45.3%)	6 (8.0%)	18 (24.0%)
Reliability	14 (18.7%)	30 (40.0%)	3 (4.0%)	19 (25.3%)
Bus stop location	31 (41.3%)	25 (33.3%)	2 (2.7%)	11 (14.7%)
Access for disabilities	6 (8.0%)	13 (17.3%)	8 (10.7%)	30 (40.0%)

- Early morning services to Scarborough or Guisborough now non-existent.
- Buses from Scarborough to Middlesbrough should come through the village at all times on the timetable, not just occasionally.
- Utilise minibus for people who don't drive to allow 2-3 hours time in Whitby.
- No evening bus service
- Extra bus in the afternoon
- Public transport minimal charge to pensioners – 50p to almost anywhere, £1 to everywhere else.
- Cost for short journeys too high in relation to cost of Scarborough to Middlesbrough charge.
- People without a car must find it difficult to get to Egton surgery.

QUESTION NO: 4*NUMBER OF RESPONDENTS TO QUESTION: 80*

Would you use a voluntary car service as a passenger?

Weekly	3 (3.8%)
Monthly	2 (2.5%)
Occasionally	32 (40.0%)
Never	43 (53.8%)

Questions 1 to 4

Interpretation: All of the questions in this group relate to transport and are, therefore, being treated together.

The returns show that, although transport problems are not widespread, the subject is worthy of a review, since 5% of respondents often have transport difficulties, and 35% occasionally. Transport to hospital and doctors head the list of destinations.

The bus service is generally regarded as reasonable, the main criticism is the timetable, with almost a quarter of respondents regarding it as poor.

There is no big demand for a voluntary car service, 40% of respondents said they would use one occasionally.

Action: (A) Current and possible future supplementary transport facilities should be investigated in light of the above results, e.g. community transport, car club. Following on from this, we should find an effective method of communicating what is available to parishioners. The new notice board should help with this.

QUESTION NO: 5*NUMBER OF RESPONDENTS TO QUESTION: 78*

Which of the following is your main means of transport?

Car/van	73 (93.6%)
Public bus	2 (2.6%)
Private bus	0 (0.0%)
Taxi	2 (2.6%)
Bicycle	0 (0.0%)
Motorbike/scooter	0 (0.0%)
Walking	1 (1.3%)
Other	0 (0.0%)

Interpretation: These results show the small numbers currently using a bus or taxi. These figures may, of course, increase if such services are improved and/or better communicated. (See action above for Qs 1 to 4.)

QUESTION NO: 6*NUMBER OF RESPONDENTS TO QUESTION: 81*

Do you consider that street parking in Aislaby presents any significant problems?

Yes	39 (48.1%)
No	40 (49.4%)
No opinion	2 (2.5%)

- Parking on one side of the road only.
- Land to be made available for parking / garages near Huntsman.
- Communal parking for properties parking on road adjacent to pub.
- Passing place between end of village and Huntsman.
- Parking bays on grassed areas near War memorial.
- No double-parking outside church.
- Parking lot at top of bank to Lodge Farm (damage to pathways and verges).
- No parking on footpath or verges.
- Off street parking
- Prohibit parking in some places to create passing places.
- Tarmac village green and mark out for parking.
- However, parked vehicles control excessive speed.

Interpretation: The subject of street parking was included in the questionnaire because it was much debated at the " Drop-In-Day" at the parish hall. Opinions are equally divided as to whether it poses a significant problem.

Action: (B) Subject to be reviewed and suggestions made.

QUESTION NO: 7*NUMBER OF RESPONDENTS TO QUESTION: 80*

Would you support the following speed control measures in Aislaby ?

Extension of the speed limited roadway	30 (37.5%)
Reduce the speed limit (currently 30mph)	26 (32.5%)
Children at play signs	24 (30.0%)
More road warning signs	10 (12.5%)
None of the above	23 (28.8%)

- Traffic calming, drivers too fast as children may be playing.
- Give way sign at junction of Egton Road and Main Road, and a mirror so vehicles coming from Egton can see up to the left.
- Speed ramps or chicanes – one at Egton/Main Road junction.
- Speed bumps near 30mph restriction
- Enforce speed limit – speed gun?
- Extend 30mph to A171.
- However, parked vehicles control excessive speed.

Interpretation: There is certainly a general feeling that something should be done about speeding.

Action: (C) Investigate the response, including suggestions, and make recommendations.

QUESTION NO: 8*NUMBER OF RESPONDENTS TO QUESTION: 82*

What do you think of the state of the following?

	<u>good</u>	<u>reasonable</u>	<u>poor</u>	<u>no opinion</u>
Roads	31 (37.8%)	43 (52.4%)	4 (4.9%)	0 (0.0%)
Pavements	18 (22.0%)	51 (62.2%)	8 (9.8%)	1 (1.2%)
Verges	24 (29.3%)	34 (41.5%)	21 (25.6%)	0 (0.0%)
Public toilets	30 (36.6%)	27 (32.9%)	3 (3.7%)	14 (17.1%)
Refuse collection	56 (68.3%)	18 (22.0%)	3 (3.7%)	3 (3.7%)

Interpretation: All of the items listed are mainly considered to be good to reasonable. The only significant figure in the "poor" category concerns verges - which were made worse by recent water main refurbishment.

Action: (D) Investigate and make recommendations for the Parish Council to pursue with the appropriate authorities - NYCC Highways.

QUESTION NO: 9*NUMBER OF RESPONDENTS TO QUESTION: 80*

How user-friendly are the pavements in Aislaby to people with disabilities, pushchairs or wheelchairs?

Good	6 (7.5%)
Reasonable	46 (57.5%)
Poor	26 (32.5%)
No Opinion	2 (2.5%)

Action: (D) As per question 8.

QUESTION NO: 10*NUMBER OF RESPONDENTS TO QUESTION: 70*

What do you think could be done to improve the environment of Aislaby ?

	<u>worth doing</u>	<u>not necessary</u>	<u>don't know</u>
Plant more trees	21 (30.0%)	3 (4.3%)	1 (1.4%)
Cut down some trees	7 (10.0%)	1 (1.4%)	1 (1.4%)
Preserve single trees in special places	36 (51.4%)	0 (0.0%)	0 (0.0%)
Repair dry stone walls	43 (61.4%)	0 (0.0%)	0 (0.0%)
Keep hedges short and tidy	46 (65.7%)	0 (0.0%)	0 (0.0%)
Let hedges grow naturally	8 (11.4%)	3 (4.3%)	0 (0.0%)
Plant more hedges	11 (15.7%)	2 (2.9%)	1 (1.4%)
Let verges grow naturally	8 (11.4%)	3 (4.3%)	0 (0.0%)

Interpretation: The significant figures concern Trees, Walls and Hedges.

Action: (S) Set up conservation group organised by volunteers.

QUESTION NO: 11

NUMBER OF RESPONDENTS TO QUESTION: 82

What do you think could be done with the local roads, lanes and paths to make the countryside more attractive?

	<u>important</u>	<u>worth doing</u>	<u>not necessary</u>
Remove litter	1 (1.2%)	59 (72.0%)	0 (0.0%)
Keep roadside verges mown and tidy	3 (3.7%)	50 (61.0%)	0 (0.0%)
Let roadside verges grow for wildlife	0 (0.0%)	14 (17.1%)	2 (2.4%)
Stop vehicle damage to road verges	1 (1.2%)	58 (70.7%)	0 (0.0%)
Signpost paths and bridleways	1 (1.2%)	27 (32.9%)	0 (0.0%)
Remove unnecessary sign posts	1 (1.2%)	17 (20.7%)	0 (0.0%)
Reduce traffic	0 (0.0%)	10 (12.2%)	1 (1.2%)
Leave them as they are	1 (1.2%)	5 (6.1%)	1 (1.2%)

- Egton Road verges should be maintained and gutters checked for proper draining of road.
- Discourage coaches.
- Verges to grow to protect walls.
- Verges to grow naturally outside village where no hazard to motorists.
- Area adjacent to Galley Hill / Moor Road a disgrace.
- Mud not cleared by quarry.
- Kerbs to protect edge of road surface.
- Verges – campaign for more stones (*N.B. it is unlawful to place any obstruction on the verge - committee*)
- Large commercial vehicles and on street parking damage verges.
- Improve ditching and drainage from Vicarage to Nelson House after mains repair (however, this is highways responsibility).
- Any scheme to reduce overhead wires (electric and telephone) through village.
- Stone paving rough and slippery
- Some footpaths ploughed.
- Footpath repair – White Row
- Footpaths difficult for those with limited mobility.

Trees comments:

- Are Egton Road trees protected?
- Plant more in other people's gardens.
- Avenue of trees toward top of Moor road to protect from snow blow.
- Better management of existing trees.

Interpretation: The figures are self-explanatory.

Action: (D & E) These are all topics that should be referred to the Parish Council and other appropriate authorities.

QUESTION NO: 12A *NUMBER OF RESPONDENTS TO QUESTION: 83*

In relation to the local footpaths and bridleways how often do you use them?

Often	34 (41.0%)
Occasionally	46 (55.4%)
Never	3 (3.6%)

QUESTION NO: 12B *NUMBER OF RESPONDENTS TO QUESTION: 80*

Can you use them without difficulty?

Yes	64 (80.0%)
No	16 (20.0%)

QUESTION NO: 12C *NUMBER OF RESPONDENTS TO QUESTION: 77*

Are they well signposted?

Yes	59 (76.6%)
No	18 (23.4%)

QUESTION NO: 12D *NUMBER OF RESPONDENTS TO QUESTION: 71*

Would you be willing to help maintain them?

Yes	19 (26.8%)
No	52 (73.2%)

Interpretation:

There is significant usage of footpaths and bridleways. Some users are having difficulties with the paths themselves, or the signs. It is encouraging that 19 responses stated a willingness to help maintain them.

Action: (E)

Propose actions and refer volunteers to existing NYMNPA schemes.

QUESTION NO: 13 *NUMBER OF RESPONDENTS TO QUESTION: 82*

The quarry has been in operation for the last 18 months - do you think further operations should be permitted after the planning permission expires in 2004?

Yes	36 (43.9%)
No	33 (40.2%)
No opinion	13 (15.9%)

- The quarry has already destroyed valuable wildlife and will do so in the future.
- Quarry to be for local use.

Action: (R)

This response should be taken into account by all authorities involved in any future Planning Application.

QUESTION NO: 14*NUMBER OF RESPONDENTS TO QUESTION: 73*

What are your views on the standard of the following services in Aislaby ?

	<u>good</u>	<u>reasonable</u>	<u>poor</u>	<u>no opinion</u>	<u>not used</u>
Fire	17 (23.3%)	5 (6.8%)	1 (1.4%)	4 (5.5%)	32 (43.8%)
Police	1 (1.4%)	1 (1.4%)	0 (0.0%)	1 (1.4%)	4 (5.5%)
Ambulance (Emergency)	24 (32.9%)	12 (16.4%)	0 (0.0%)	2 (2.7%)	24 (32.9%)
Hospital (Transport)	6 (8.2%)	6 (8.2%)	2 (2.7%)	1 (1.4%)	40 (54.8%)
Police (Emergency)	7 (9.6%)	9 (12.3%)	6 (8.2%)	5 (6.8%)	31 (42.5%)
Police (Bobby)	9 (12.3%)	13 (17.8%)	13 (17.8%)	4 (5.5%)	22 (30.1%)

Interpretation: Overall, these services appear to be reasonable, with the possible exception of police visibility – 17.8% (13) said “poor”.

Action: (R) For information only.

QUESTION NO: 15*NUMBER OF RESPONDENTS TO QUESTION: 78*

Should Aislaby have a Neighbourhood Watch Scheme?

Yes	53 (67.9%)
No	6 (7.7%)
No opinion	19 (24.4%)

Interpretation: Response indicates interest in such a scheme. Volunteers would be required to run it, possibly with a community PC.

Action: (F) Enlist volunteers and set up scheme.

QUESTION NO: 16*NUMBER OF RESPONDENTS TO QUESTION: 82*

Is the standard of street lighting in the village ?

Good	10 (12.2%)
Reasonable	44 (53.7%)
Poor	27 (32.9%)
No Opinion	1 (1.2%)

- Black spot between Parish Hall, bus stop and war memorial.
- More lights needed on Egton Road
- Lighting to be in keeping with the village, i.e. light footpaths, not sky

Interpretation: Apparent lighting black spots mainly in the village hall vicinity, bus stop and war memorial, Egton road. Some need for extra lighting in these places, preferably down directional to avoid night sky pollution.

Action: (G) Scarborough Borough Council to be informed of results via Parish Council.

QUESTION NO: 17*NUMBER OF RESPONDENTS TO QUESTION: 50*

If the following classes were provided would you attend?

Computing	32 (64.0%)
Languages	6 (32.0%)
Yoga / keep-fit	27 (54.0%)
Badminton	13 (26.0%)
Table Tennis	6 (12.0%)
Crafts	16 (32.0%)
Woodwork	7 (14.0%)
Art	21 (42.0%)

- 1 day or evening hopefully with Alan Titchmarsh.
- Intermediate classes, as well as beginners.
- Country/barn dance.

Interpretation: There is a good demand for classes in computing.

Action: (H) Information to be passed to the Parish Hall Committee to investigate class options and times.

QUESTION NO: 18*NUMBER OF RESPONDENTS TO QUESTION: 53*

What is the best time of day for classes?

Morning	14 (26.4%)
Afternoon	21 (39.6%)
Evening	39 (73.6%)

Interpretation: Afternoon and evening classes would appear to be most popular.

Action: (H) Information to be passed to the Parish Hall Committee to investigate class options and times.

QUESTION NO: 19*NUMBER OF RESPONDENTS TO QUESTION : 80*

If mains gas were available, would you like to be connected?

Yes	47 (58.8%)
No	33 (41.3%)

- Gas – if boiler needed replacement.

Interpretation: More than half of responses were affirmative. Probably an expensive operation given the numbers involved.

Action: (I) British Gas to be contacted for comment.

QUESTION NO: 20*NUMBER OF RESPONDENTS TO QUESTION: 74*

If broadband internet services were available in the village would you like to be connected?

Yes	37 (50.0%)
No	37 (50.0%)

Interpretation: There seems to be a definite demand.

Action: (J) Press Report, April 2004 – 99% of North Yorkshire folk to have broadband access by summer 2005 – wait and see if we get it! If not, investigate other options.

QUESTION NO: 21*NUMBER OF RESPONDENTS TO QUESTION: 40*

Do you have reception difficulties with the following?

Radio	11 (27.5%)
Television	13 (32.5%)
Mobile phone	16 (40.0%)

- Occasional atmospheric problems
- Problems with terrestrial TV.

Interpretation: (R) Numbers not large enough to justify any action.

QUESTION NO: 22*NUMBER OF RESPONDENTS TO QUESTION: 82*

Scarborough Borough Council proposes to introduce a kerbside collection of cans plastic bottles and newspaper within the next 2 years - would you like to see this developed further to include, for example, glass bottles?

Yes	66 (80.5%)
No	6 (7.3%)
No opinion	10 (12.2%)

- Bottle, newspaper bank, and garden waste facilities wanted.
- Collection bins out of the way so as not to add to litter
- Put facilities outside village as in France
- Those not recycling to pay extra to Parish Precept judged by weight per bin per person in the household.
- Wheelie bins on pavements dangerous at night.
- Include electrical equipment.
- More bins, more litter, more congestion.

Interpretation: A lot of interest in this topic. Quite a strong feeling that although welcome, the bins should be placed where they are not an obstruction and would not add more litter in the vicinity. Hopefully they would be emptied before overflow was reached.

Action: (K) Statistics to SBC, and investigate other schemes, including private collection schemes.

QUESTION NO: 23*NUMBER OF RESPONDENTS TO QUESTION : 57*

If the following mobile services were provided, how often would you use them?

	<u>weekly</u>	<u>monthly</u>	<u>occasionally</u>	<u>never</u>	<u>don't know</u>
Grocer	15 (26.3%)	0 (0.0%)	9 (15.8%)	9 (15.8%)	2 (3.5%)
Fast food	4 (7.0%)	0 (0.0%)	8 (14.0%)	11 (19.3%)	1 (1.8%)
Bank	8 (14.0%)	1 (1.8%)	13 (22.8%)	9 (15.8%)	1 (1.8%)
Post Office	19 (33.3%)	1 (1.8%)	17 (29.8%)	9 (15.8%)	1 (1.8%)

- Mobile bank to accept payment into any bank.
- Shop – if papers stocked

Interpretation: The Post Office appears to be the most sought after, but viability needs to be investigated.

Action: (L) Explore the options.

QUESTION NO: 24*NUMBER OF RESPONDENTS TO QUESTION : 76*

If a community shop were opened in Aislaby how often would you use it?

Weekly	25 (32.9%)
Monthly	2 (2.6%)
Occasionally	41 (53.9%)
Would not use	1 (1.3%)
Don't know	7 (9.2%)

Interpretation: The greatest number in the occasional bracket makes viability again the question.

Action: (M) Investigate options, as for PO, and make recommendations.

QUESTION NO: 25*NUMBER OF RESPONDENTS TO QUESTION : 76*

Should Aislaby have a children's playground / recreation area?

Yes	46 (60.5%)
No	9 (11.8%)
No opinion	21 (27.6%)

- Care must be taken that the playground is not a trade-off for new housing.
- Should have a boules court.

Action: See Question 26

QUESTION NO: 26*QUESTION FOR COMMENT*

Where should it be located?

- Nowhere noise could annoy, and where supervised at all times.
- Outside Parish Hall
- Behind pub in field.
- In quarry or moor.

Interpretation: There is an interest for this kind of facility.

Action: (N) Playground/recreation areas to be identified; options to be discussed and persons with particular interests to come forward with proposals. Set up a sub-committee (volunteers) to investigate.

QUESTION NO: 27*NUMBER OF RESPONDENTS TO QUESTION : 79*

The Parish council is empowered to raise money through the Parish Precept, which is currently set at just under 3% of your council tax. Are you satisfied with the way this money is spent?

Very satisfied	7 (8.9%)
Quite satisfied	24 (30.4%)
Quite dissatisfied	2 (2.5%)
Very dissatisfied	0 (0.0%)
Don't know how it is spent	39 (49.4%)
No opinion	7 (8.9%)

Interpretation: Half the respondents were not aware how this money was spent, and most of the remainder were satisfied.

Action: (O) Public awareness of use of public money to be increased – increase awareness of public meetings via Parish Magazine, Whitby Gazette, and use of notice board.

QUESTION NO: 28 *NUMBER OF RESPONDENTS TO QUESTION : 79*

Would you be prepared to pay a slightly higher Parish precept to meet some of the needs of Aislaby, e.g. retention of the public toilets?

Yes	46 (58.2%)
No	24 (30.4%)
No opinion	9 (11.4%)

- Parish council shouldn't have to maintain toilets; we pay enough council tax.
- Council tax should be spent more locally.

Action: (R) For information only.

QUESTION NO: 29 *NUMBER OF RESPONDENTS TO QUESTION : 76*

Should the following be encouraged in and around Aislaby?

	<u>Strongly</u> <u>In favour</u>	<u>in favour</u>	<u>no strong</u> <u>opinion</u>	<u>have</u> <u>reservations</u>	<u>definitely</u> <u>not</u>
Tourism development /attractions	3 (3.9%)	13 (17.1%)	9 (11.8%)	11 (14.5%)	35 (46.1%)
Small business development	3 (3.9%)	17 (22.4%)	14 (18.4%)	12 (15.8%)	26 (34.2%)
Small-scale industrial workshops	2 (2.6%)	17 (22.4%)	13 (17.1%)	15 (19.7%)	25 (32.9%)
More jobs in Aislaby	5 (6.6%)	15 (19.7%)	21 (27.6%)	11 (14.5%)	16 (21.1%)

Interpretation: Only a minority appear to be in favour of these. This information should be taken into account by the planning authorities.

Action: (P) Refer information to appropriate authorities.

QUESTION NO: 30 *NUMBER OF RESPONDENTS TO QUESTION: 80*

Is anyone in your household affected by lack of appropriate housing or business premises?

Yes	4 (5.0%)
No	76 (95.0%)
Other	0 (0.0%)

Interpretation: It is obvious from the replies that few people have any problems with availability of housing and business premises.

Action: (P) To consider this majority view along with Q31-33.

QUESTION NO: 31*NUMBER OF RESPONDENTS TO QUESTION : 77*

Do you think the village should accommodate more new housing?

Yes	25 (32.5%)
No	44 (57.1%)
Don't know	8 (10.4%)

Interpretation: The substantial majority of people do not consider there is any need to expand the housing stock. However, the minority view should be taken into account when deciding what action should be taken. Some new housing is probably inevitable in the future.

Action: (P) Consider along with comments at end of question 33.

QUESTION NO: 32*NUMBER OF RESPONDENTS TO QUESTION : 71*

Is there need for more accommodation of the following types in the village ?

Private rented	6 (8.5%)
Local authority/housing association rented	9 (12.7%)
Owner occupied	17 (23.9%)
Shared ownership	2 (2.8%)
By virtue of employment (e.g. MOD/tied)	1 (1.4%)
Sheltered housing	9 (12.7%)
Adapted housing	1 (1.4%)
Restricted sale to local people	29 (40.8%)
Low cost sale	15 (21.1%)
Other	1 (1.4%)
There is no need for any of these	30 (42.3%)

Interpretation: There is a minority of votes for in all cases.

Action: (P) Consider along with comments at end of question 33.

QUESTION NO: 33*NUMBER OF RESPONDENTS TO QUESTION : 78*

What type(s) of housing development would be acceptable in Aislaby ?

None	25 (32.1%)
Single dwellings in controlled location	26 (33.3%)
Small groups of less than 5	17 (21.8%)
Larger groups	2 (2.6%)
Conversion of redundant buildings	44 (56.4%)

- Conversion of redundant buildings where applicable would not destroy character / atmosphere of village.
- Most people move to the village for a quiet and secure life, all works well, don't change it.
- Children are known by the people in the village: strangers stand out.
- Housing needs to be affordable to local people, not ostentatious and expensive.
- Limited, and preferably not holiday lets/homes.
- For employed people only.
- Shared equity
- Within existing boundaries.
- All developments to provide off street parking/garaging.

Interpretation:

Although there was a majority vote for no new housing, it was felt that should there have to be new housing, the following points should be considered by the Parish Council:

- 1) Alterations to redundant buildings to provide simple and environmentally acceptable housing.
- 2) Encourage single, environmentally acceptable, owner occupied housing in the right areas and infill sites – conservation areas excluded.
- 3) Conversions to provide lower cost housing.
- 4) Consider individual applications for single houses and for special cases.

(The responses appear to fit in with the NYMNPA Local Plan).

Action: (P)

This committee feels that it can only report these results to the Parish Council and the National Park.

QUESTION NO: 34*NUMBER OF RESPONDENTS TO QUESTION : 80*

Is St Margaret's Church important to you?

For Sunday worship	27 (33.8%)
For baptisms weddings and funerals	47 (58.8%)
As a focal point for the community	54 (67.5%)
As an historic building	29 (36.3%)
Every village should have one	38 (47.5%)

Action: (R)

For information – pass results onto the PCC.

ACTION PLAN

Developed by the Parish Plan Steering Committee.

This plan shows how the ACTIONS resulting from the questionnaire analysis will be progressed.

The Plan is to be used as a guide: it is a working document and will be changed as appropriate, as work progresses.

The objective is to bring each action to a firm conclusion as soon as possible.

There are a number of sources for potential funding of projects. Part of the task of investigating each action will be to identify the relevant sources.

Volunteers are needed to carry out many of the actions. The Parish Council will monitor and co-ordinate the volunteers' work, but it is emphasised that it is primarily a community exercise, not a Parish Council one.

Instructions on how to volunteer are on the covering letter.

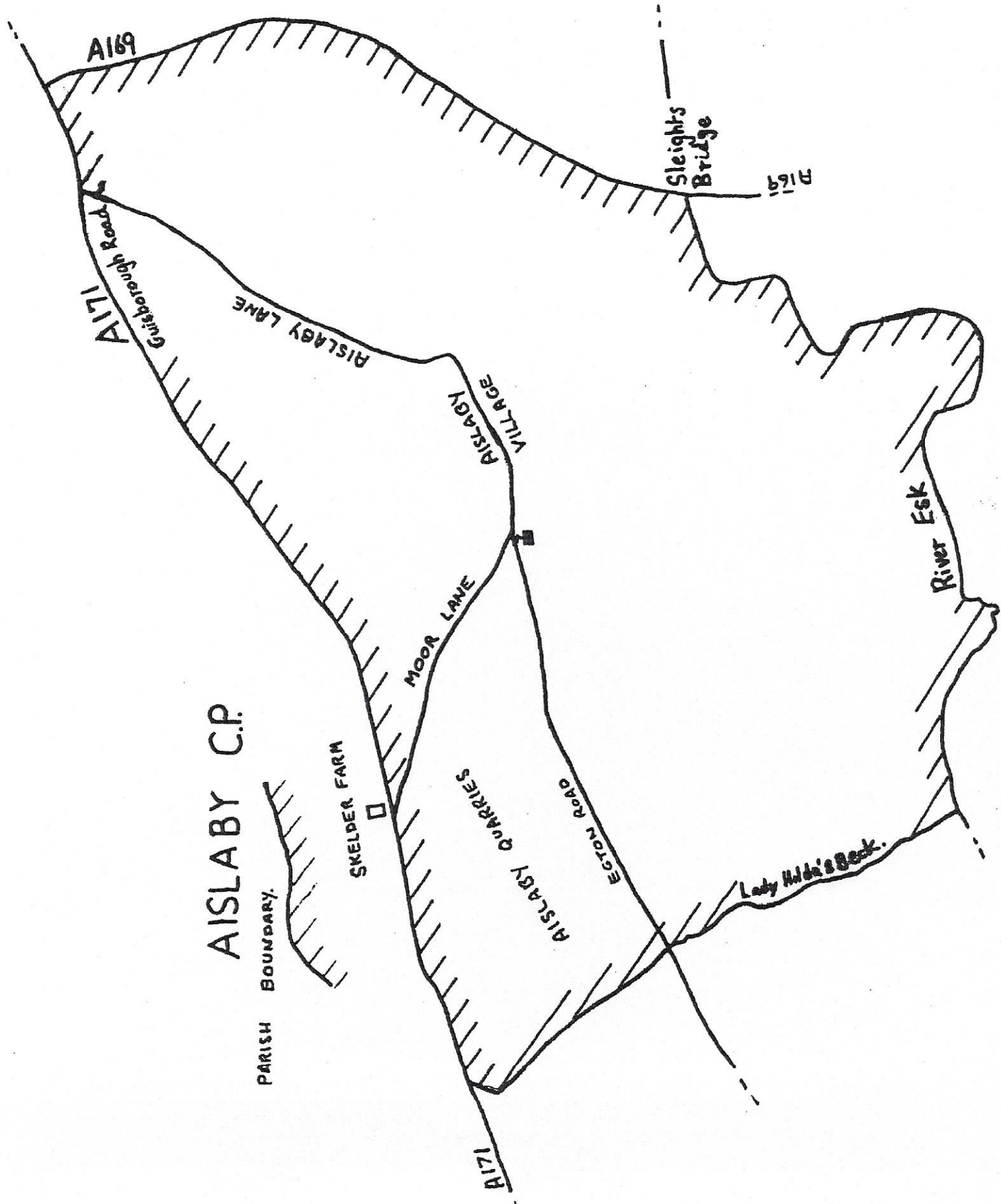


Action Ref.	The Action	How it will be tackled	Priority	Key People	Estimated Timescale	Success Criteria
A	Investigate Transport Facilities & communicate results.	Search for solutions to the main problems identified.	Medium.	Managers of service providers; Volunteer Residents; Scarborough Borough Council.	6 months to final completion.	Determine any realistic changes and communicate to Parishioners.
B	Review street parking in the village.	Taking into account the questionnaire response, attempt to find workable improvements to parking practices.	High.	Volunteer residents. Police. Highway authority.	8 months to final completion.	Implementation of improved practices. Reduction of inconvenience and hazards.
C	Investigate speed control.	Take into account the questionnaire response. Make recommendations.	High.	As above.	As above.	Implementation of recommended changes.
D	Investigate poor state of roadside verges etc.	Discuss with key people and make recommendations to Parish Council.	Medium.	Volunteer residents. Highway authority.	12 months to final completion.	Highway authority to make improvements.
E	Investigate responses on footpaths and bridleways.	Liaise with NYMNP Authority via Parish Clerk.	Medium	Volunteer Residents. Parish Council.	Ongoing volunteer scheme.	Identify volunteers for maintenance and implement.
F	Investigate schemes for neighbourhood watch.	Set up by volunteer residents.	High.	Volunteer Residents. Police; Area Neighbourhood Watch coordinator.	3 months to final completion.	Scheme in operation.
G	Inform Scarborough Borough Council of street lighting concerns.	Parish Council to write to SBC.	Medium	Parish Council.	12 months to final completion.	SBC to implement suitable improvements.
H	Inform Parish Hall Committee of demand for classes.	Parish Hall Committee to study viability of extra classes.	Medium.	Parish Hall Committee.	6 months to final completion.	Implement Parish Hall Committee recommendations.
I	Contact British Gas re. installing supply to parish.	Parish Council to write to BG.	Low	Parish Council.	4 months to obtain response.	Obtain a definitive response from BG.
J	Investigate Broadband options.	Discuss with BT after summer 2005.	Medium.	Volunteer Resident.	4 months to completion.	Advise parishioners of current possibilities.
K	Advise Scarborough BC. of recycling survey results.	Volunteer residents to lobby SBC for best possible outcome; investigate other options.	High.	Volunteer residents. SBC.	12 months for completion of SBC's actions.	Implement recommendations.



Action Ref.	The Action	How it will be tackled	Priority	Key People	Estimated Timescale	Success Criteria
L	Investigate mobile services.	Volunteer residents.	Low.	Volunteer residents.	6 months to completion.	Implement recommendations.
M	Investigate village shop schemes / viability.	Volunteer residents.	Low	Volunteer residents.	6 month investigation.	Implement recommendations.
N	Investigate Playground / Recreation Area	Study by a sub-committee of interested residents.	Medium	Sub-committee of volunteer residents. Landowners. NYMNP Planners. Grant providers.	6 month investigation. Timescale of any subsequent actions to be advised.	Implement recommendations.
O	Increase public awareness of use of public money.	Use new noticeboard and press releases to disseminate information on expenditure, and advise dates of public meetings.	Medium.	Parish Council.	Use board as soon as it is erected.	Regular use of noticeboard.
P	Study the questionnaire responses to the topics of development of Tourism / Businesses / Jobs / Housing in the parish.	By a sub-committee of residents. The responses should be developed into a definitive document for distribution to all bodies with an influence on future planning decisions.	High.	Sub-Committee of volunteer residents; NYMNP; Whitby & District Regeneration Group; Scarborough Borough Council.	12 months to issue of document.	Issue the definitive document to : Parish Council. Whitby T.C. Scarborough B.C. NYMNP. Local MP.
Q	Delivery of Parish Plan.	By volunteers to all households; send to all relevant authorities.	High.	Steering Committee. Volunteers.	Deliver by end of August.	.Plan clearly written up and delivered.
R	Topics for information only.	Information to be passed forward.	High.	Steering Committee.		Action completed.
S	Conservation Volunteers.	Working Group to identify and address issues.	Medium.	Volunteer Residents.	Set up Group – 1 month. Then ongoing.	Effective work by the group.

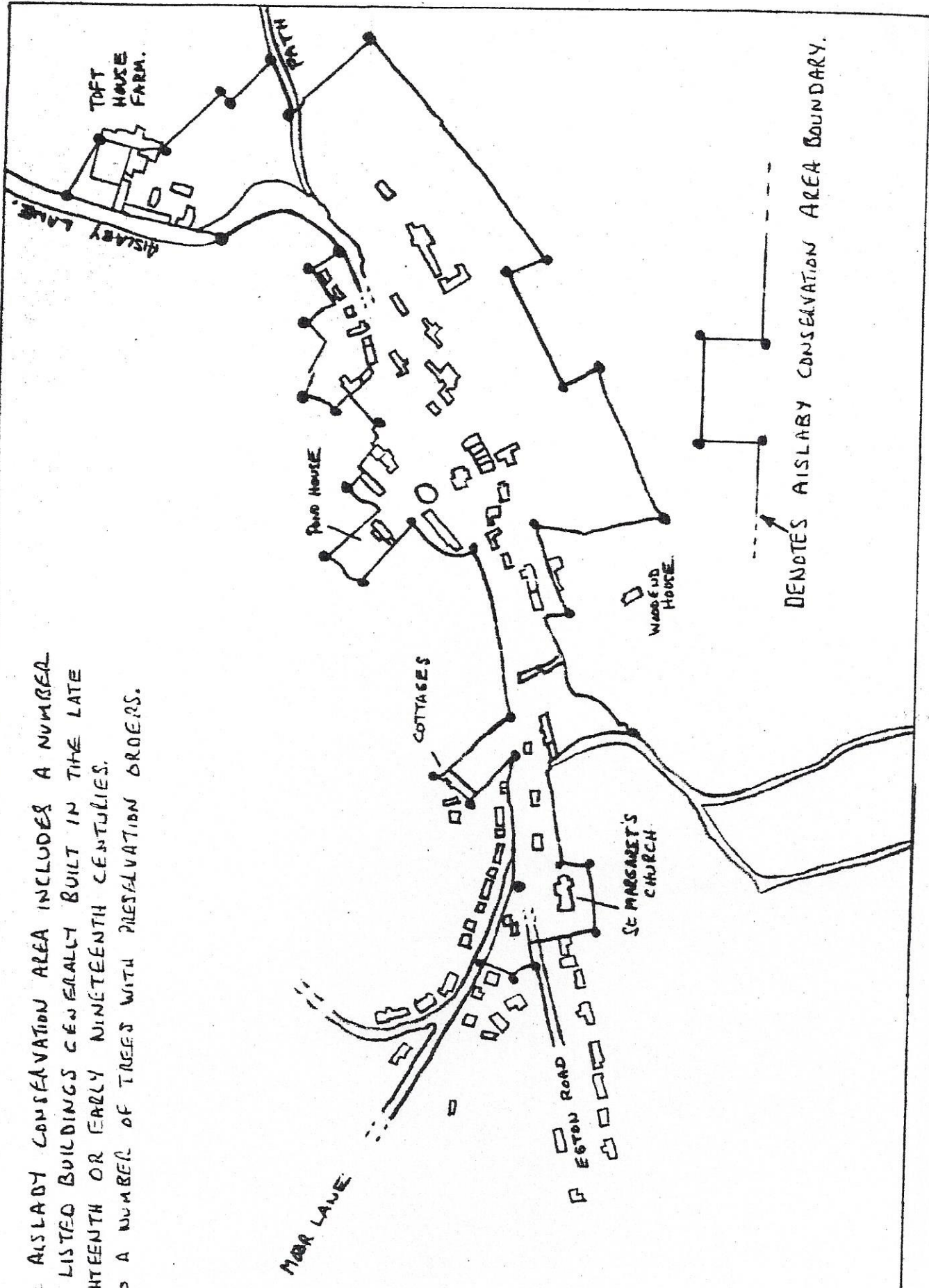
PARISH BOUNDARY





CONSERVATION AREA BOUNDARY

THE AISLABY CONSERVATION AREA INCLUDES A NUMBER OF LISTED BUILDINGS GENERALLY BUILT IN THE LATE EIGHTEENTH OR EARLY NINETEENTH CENTURIES. ALSO A NUMBER OF TREES WITH PRESERVATION ORDERS.



PARISH PLAN FINANCES

Parishioners may be interested to note that all activities associated with the production of this plan have been carried out at minimal cost to the Parish.

In fact the Parish has benefited financially because of two factors:

- All labour has been voluntary.
- The exercise has attracted certain grants.

The **COUNTRYSIDE AGENCY** cover up to 75% of the costs of producing a Parish Plan; the remainder will be covered by volunteer time and other grants. They also agreed with the steering committee that the village needed a new notice board of sufficient size to display all relevant Parish Council and related notices. They agreed to provide £200 towards this.

The **SHELL BETTER BRITAIN CAMPAIGN** has donated £1,000. Approximately £150 of this was used to cover the initial costs associated with the Plan, (until the Countryside Agency funds were received) and the remainder will go towards the notice board.

The **NORTH YORKSHIRE SMALL PROJECTS FUND** has donated £200 towards the notice board.

The **NORTH YORK MOORS NATIONAL PARK AUTHORITY** has also donated £200 for the notice board.

Note: The notice board has been ordered and should be delivered by autumn this year. It will be fixed on the wall of the bus shelter / public conveniences. It will be of high quality design and constructed of oak.

